



Season's Greetings to all our partners and clients across the Green Triangle. We trust that 2009 has been a good year for you and your organization and that 2010 will be even better.

From the SERIC Team,
 Shannaka, Darren, Tony and Terry



2009-10 Fire Maps

Draft copies were circulated to the FOC Reference Group on Wednesday, November 25 and the final version distributed to all FOC members after edits in early December. The process commenced later than usual this year and our ability to work to previous timelines has been greatly assisted by the timely provision of data by participating forestry companies.

Thank you for your efforts!

capability

n pl -ties

1. the quality of being capable; ability
 2. (*usually plural*) a characteristic that may be developed; potential aptitude
- Collins English Dictionary

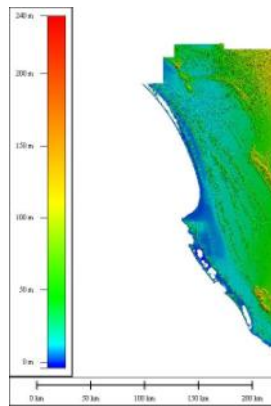
Most people associate SERIC with making maps. What is not well understood is that the use of GIS technologies to produce maps relies on data sets. It is the combination of those data sets that allows you to produce a map with the themes and information you require displayed to best advantage.

Critical to the provision of spatial solutions is the ability to "interrogate the data," to use a bit of jargon. The process of data analysis involves an ability to establish a methodology to interrogate available data, so that it can be utilized to develop a model or database. SERIC has undertaken several large Wood Flow projects over the past 5 years which have been highly regarded both within the forestry and transport sectors.

SERIC holds many data sets on behalf of its partners and can acquire other data as required. If you have a spatial problem, give SERIC a call. We are more than capable.

Launch of South East Digital Elevation Model (DEM) in February

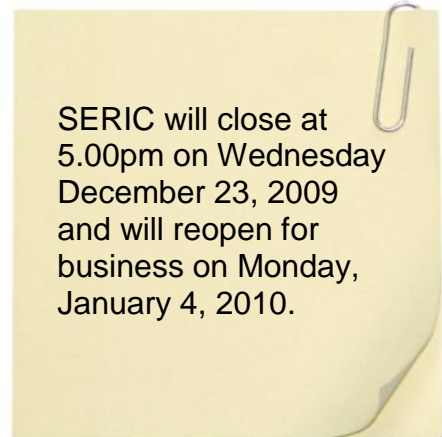
In mid 2007 SERIC signed an agreement with AAMHatch on behalf of a consortium of partners for the acquisition of a Digital Elevation Model for the South East. Significant contributions from the Department of Water, Land and Biodiversity Conservation (DWLBC), Department of Environment and Heritage, (DEH), Geoscience Australia and Forestry SA, have provided a DEM on 2 and 10 metre grids and a mass of accompanying data which will be of use to researchers in the future.



The Digital Elevation Model is currently being utilized for the Upper South East Program with its focus on Dryland Salinity and Flood Mitigation, for the Regional Flows project, Coorong Lower Lakes and Forestry operations planning.

The acquisition of the South East DEM provides a very significant tool for both scientific and land management purposes. It is a valuable resource and illustrates the value of co-ordinated approaches to data acquisition producing multiple benefits to partners.

To celebrate this important addition to our resources, SERIC will host an official launch of the South East DEM on Wednesday, February 24 in the City Hall, Mount Gambier commencing at 2.00pm. More information to follow shortly.



SERIC will close at 5.00pm on Wednesday December 23, 2009 and will reopen for business on Monday, January 4, 2010.